

Building a future without waste.



rts x EARTH DAY 



# What is waste?



UNWANTED  
MATERIALS



USED UP  
MATERIALS



FOOD  
SCRAPS



PACKAGING



OLD CLOTHING



# What is a waste stream?





# Recycling

Look for the blue can with  
a recycling symbol!



## What can be recycled?

Paper  
Plastic  
Metal  
Glass



## Did you know?

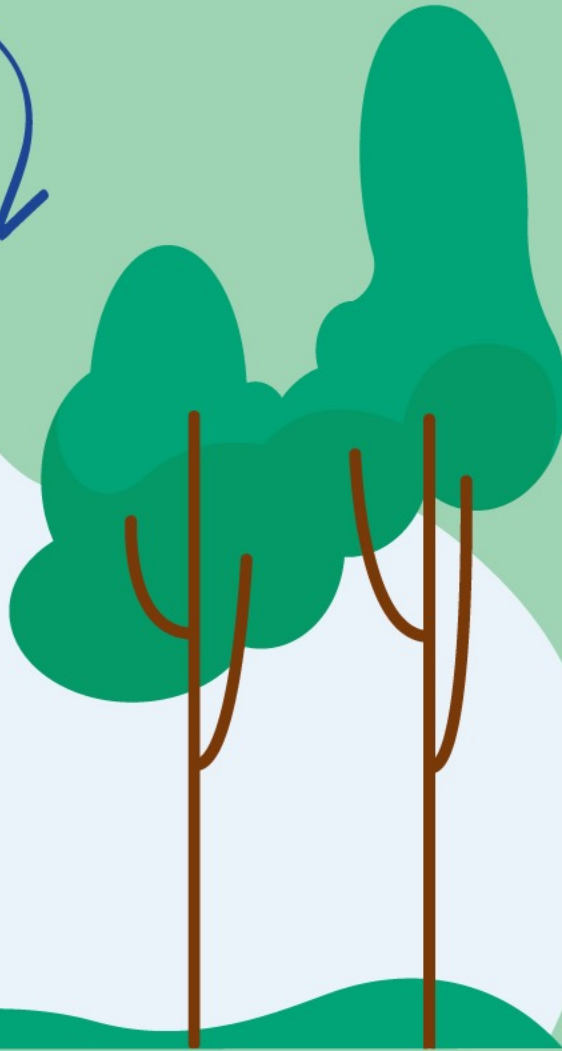


One park bench  
can be created  
from recycling  
3,400 milk jugs!



# Organics

This is often called compost!



## What can be composted?

Fruit scraps  
Veggie scraps  
Dairy products\*  
Meat\*



*\*Only in some areas*

## Important facts:

Compost gets turned into soil used in gardens to grow more food!

Only composted what can break down, as contamination can cause problems.



# Trash

Bins for trash are usually black and most common.



## What can be trashed?

Snack bags

Styrofoam

Takeout containers

Plastic bags



## Did you know?

Materials that go in the trash get sent to landfills or incinerators, which worsens the environment.



# Additional waste streams



PLASTIC  
BAGS



ELECTRONIC  
WASTE



HAZARDOUS  
WASTE



TEXTILE  
WASTE



Why should  
we work to  
reduce waste?





# Landfills + incinerators

Trash sent to landfills doesn't break down because it's piled on top of itself. Anything that breaks down does so without oxygen, causing bad gases to be released into Earth's atmosphere, contributing to climate change.



Did you know?

Each year, Americans throw out about **140 million tons** of trash.



That's about the same weight as **602 skyscrapers**.



So how can  
you help to  
reduce trash?



# Perform an at-home waste audit

Here are the steps:



SUIT UP!



SORT!



WEIGH!



ANALYZE!

Take the time to figure out what you have and your waste footprint.

# What to do

After gearing up with goggles and gloves, sort your items by waste type and throw into separate labeled containers. Reuse a tarp or sheet to minimize mess. Weigh each bin when complete, and log the weights.



**Analyze the waste you've collected.**

Take note of what streams you produce most at home.

Consider what can be replaced with reusable options.



# Other ways to reduce waste



BUY IN BULK



REPAIR YOUR CLOTHES



Thanks for joining us for Earth Day!



Questions about this presentation or want to talk about your waste management needs? Let's talk!  
Reach out to [info@rts.com](mailto:info@rts.com) to start the conversation.

